

KoskiPly

Color



Thin plywood made with dyed birch veneers

KoskiPly Color is cross-banded thin veneer plywood, made from birch veneers and faced with dyed birch veneer.

The face veneer of the plywood panel is through-coloured using an ecological method, which also makes it possible to sand the plywood without causing the colour to fade. The surface of the plywood can also be further treated for example with wax, if required.

KoskiPly Color's velvety tones and unique surface bring any end product to life. The earthy tones interact beautifully with light and there are several colour options to choose from. These properties make KoskiPly Color ideal for design products that require a unique appearance.



BIRCH

LOW
EMISSIONECO-
FRIENDLYTHIN
PLYWOODEASY TO
LASERCUTCORE
VENEERS
QUALITYEASY
MACHINING

DECORATIVE

FURNITURE AND
DECORATION

+ Ecological and environmentally friendly material

+ Suitable for laser cutting

+ Through-dyed surface veneer (0,6mm)

+ Velvety, lively and unique surface



KOSKISEN

KoskiPly Color



Technical specifications

Base plywood Koskisen thin plywood made of Finnish birch with special dyed reconstituted veneers

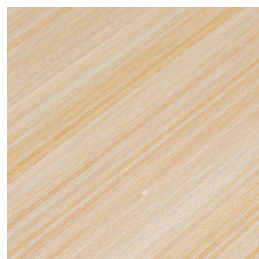
Bonding Interior or Flex bonding

Surface quality Surface is reconstituted through-dyed birch veneer. The width of one single veneer is approximately 1,3 mm. Being a natural wood product the colour and structure may vary little from onelot to another. Single veins, hairs or live knots allowed occasionally and can be seen lively surface or light stripes

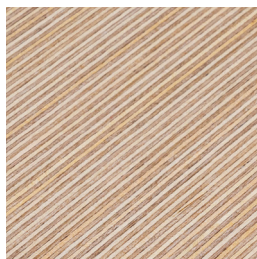
Standard thicknesses 1,5 mm - 3 ply / 2,0 mm - 4 ply / 2,5 mm - 5 ply / 3,0 mm - 6 ply / 3,5 mm - 7 ply, 4,0 mm - 8 ply / 4,5 mm - 9 ply / 5,0 mm - 10 ply / 5,5 mm and up to 20 mm

Standard sizes Interior or flex glueline 1220 x 1220 mm

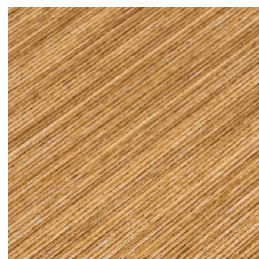
Standard colors (the color schemes are indicative)



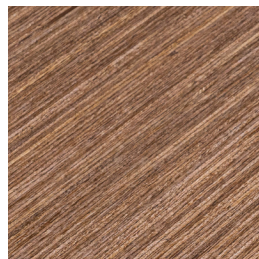
Light Natural
LN



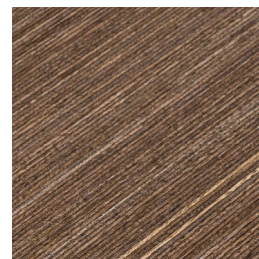
Natural
LPLY



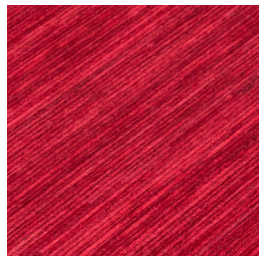
Oakmeadow
LOA



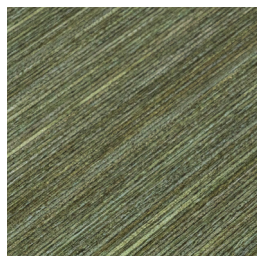
Teak Brown
LBW



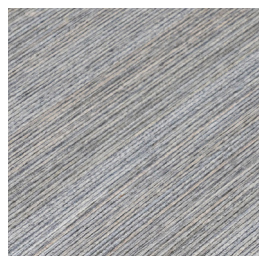
Chocolate Brown
LWAC



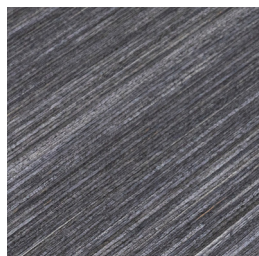
Ruby Red
LR



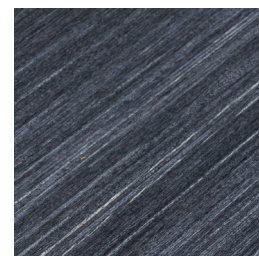
Moss Green
LGGR



Silver Grey
LSG



Antique Grey
LMG



Carbon Grey
LEBC

Environment

Our raw material, wood is an ecological and renewable material and it stores carbon during its whole life cycle. Koskisen plywood products are manufactured in Finland according to the strictest sustainability principles. Koskisen is a pioneer in the Finnish forest industry in paying attention to the environment and the wood's supply chain is always known in detail. Finnish forests are primarily privately owned and the owners are guided by a strong commitment to long-term forestry and forest cultivation. Yearly, Finnish forests grow more than they are harvested. This guarantees a sustainable and environmentally sound raw material.

Additional information

Wood is a living material and every panel is unique. Therefore a photograph or a sample piece cannot represent a full sized panel as regards colours, shades, figure, knots etc. Please note that a slight colour variation is accepted between panels. The information, although based on extensive testing, is intended as a guideline only and comes without warranty. We reserve the right to amend specifications without notice. Any defects other than those caused by clearly verified production or service faults by the supplier are the responsibility of the user. Any claim for compensation is limited to the value of the defective panels. The Seller makes no guarantee that the goods are fit for a particular purpose, unless it provides a written declaration of their suitability.



Koskisen Thin Plywood Industry

Otavantie 395, 52550 Hirvensalmi, FINLAND

tel. +358 20 553 41

koskisen.com



FSC
www.fsc.org

FSC® C116522