

KoskiWall



Quick and easy to install

KoskiWall is an uncoated board for dividing walls and for the internal facing of exterior walls. The boards can be nailed with ordinary wire nails or screwed onto the studs. They are also very easy to plaster.

For dry conditions we recommend mainly the straight-edged 11-mm-thick standard chipboard. If the walls are subject to heavy loads, the 12-mm-thick board with a straight or matched edge can be used. TG tongued board enables either butt and chamfer joint on the surface depending on which side of the panels are being used.

For moist conditions moisture resistant P5 quality is also available.

KoskiWall is suitable especially internal facing of exterior walls, dividing walls, ceilings and roof support boards (P5).



EASY TO USE



EASY
MACHINING



ACOUSTIC

+ Rapid installation

+ Easy to work

+ Solid and dense surface

+ Heavy objects can be secured firmly onto the wall

+ The strength of the board is constant in every direction

+ Good sound-insulating capacity



KOSKISEN

KoskiWall



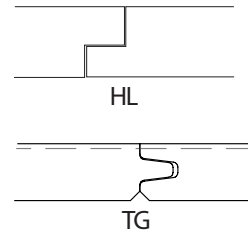
Technical specifications

Raw material	Saw dust and wood chips from our own wood industry
Base board	Chipboard to meet standard EN 312
Formaldehyde class	Class E1 EN 312
Thickness	11 mm with straight edges
Sizes	1200 x 2600 mm Other sizes at request.
Density	Depends on the thickness and type of the board about 700 kg/m ³
T&G alternatives	With two long edges T& or with all four edges T&G
Painting	Contact your paint supplier to choose the suitable paint for preventing bark spots showing through the paint.
Machining	Drilling of holes edge machining like T&G, chamfer and rebate on request.
Other data	Detailed technical values can be found in Koskisen's Declaration of Performance (DoP). Please visit Koskisen website.

Pallet sizes

Thickness	Size	Pcs / pll
11	1200x2600	69

Shape of T&G



Sustainability

Koskisen's products are safe for their intended use and meet the quality, environment and product specific requirements set for them. Product development emphasises the development of responsible and sustainable product features. The focus is on improving the long-term use, renewability, safety, and traceability of products. Read more: koskisen.com/sustainability

Additional information

Koskisen chipboard is made from our own sawmill's sawdust and contains 90% real wood. Our professional quality control ensures that Koskisen chipboard is always pure and does not include sand or other impurities. Pure and high-quality chipboard is easy to machine and it doesn't damage saw blades.

The information, although based on extensive testing, is intended as a guideline only and comes without warranty. We reserve the right to amend specifications without notice. Any defects other than those caused by clearly verified production or service faults by the supplier are the responsibility of the user. Any claim for compensation is limited to the value of the defective panels. The Seller makes no guarantee that the goods are fit for a particular purpose, unless it provides a written declaration of their suitability.



Koskisen Panel Industry

Tehdastie 2, 16600 Järvelä, FINLAND
tel. +358 20 553 41
koskisen.com

