

KoskiPly

Color



Thin plywood made with dyed birch veneers

KoskiPly Color is cross-banded thin veneer plywood, made from birch veneers and faced with dyed birch veneer.

The face veneer of the plywood panel is through-coloured using an ecological method, which also makes it possible to sand the plywood without causing the colour to fade. The surface of the plywood can also be further treated for example with wax, if required.

KoskiPly Color's velvety tones and unique surface bring any end product to life. The earthy tones interact beautifully with light and there are several colour options to choose from. These properties make KoskiPly Color ideal for design products that require a unique appearance.



BIRCH



THIN
PLYWOOD



EASY TO
LASERCUT



CORE
VENEERS
QUALITY






EASY
MACHINING



DECORATIVE



FURNITURE AND
DECORATION

-  Through-dyed surface veneer (0,6mm)
-  Suitable for laser cutting
-  Velvety, lively and unique surface



KOSKISEN

KoskiPly Color



Technical specifications

Base plywood Koskisen thin plywood made of Finnish birch with special dyed reconstituted veneers

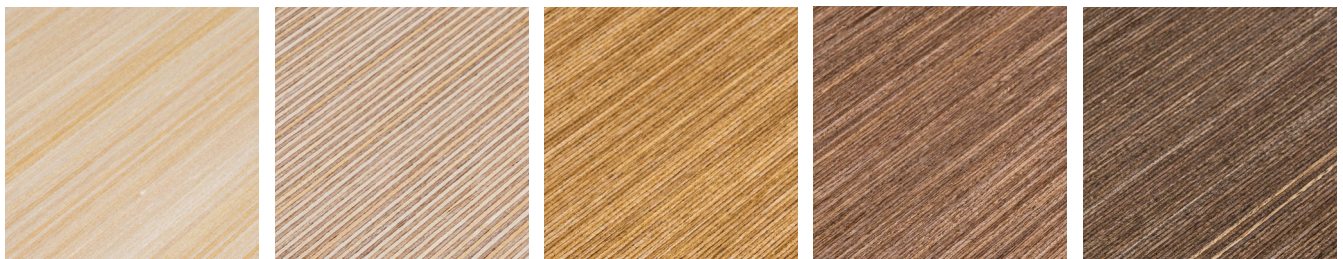
Bonding Interior or Flex bonding

Surface quality Surface is reconstituted through-dyed birch veneer. The width of one single veneer is approximately 1,3 mm. Being a natural wood product the colour and structure may vary little from one lot to another. Single veins, hairs or live knots allowed occasionally and can be seen lively surface or light stripes

Standard thicknesses 1,5 mm - 3 ply / 2,0 mm - 4 ply / 2,5 mm - 5 ply / 3,0 mm - 6 ply / 3,5 mm - 7 ply, 4,0 mm - 8 ply / 4,5 mm - 9 ply / 5,0 mm - 10 ply / 5,5 mm and up to 20 mm

Standard sizes Interior or flex glueline 1220 x 1220 mm

Standard colors (the color schemes are indicative)



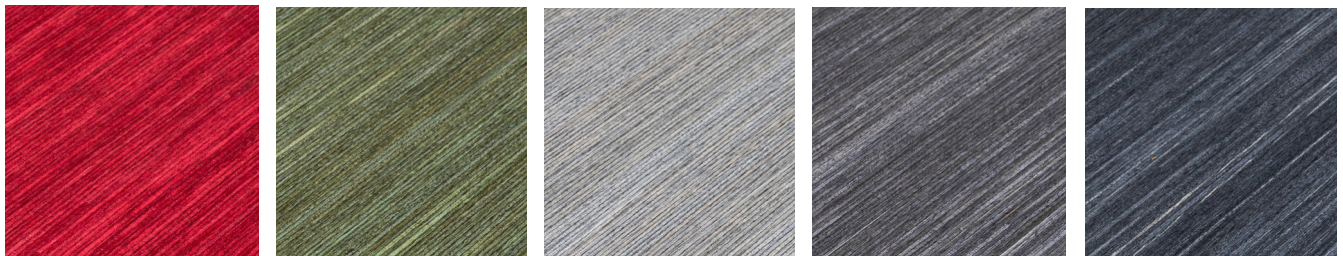
Light Natural
LN

Natural
LPLY

Oakmeadow
LOA

Teak Brown
LBW

Chocolate Brown
LWAC



Ruby Red
LR

Moss Green
LGGR

Silver Grey
LSG

Antique Grey
LMG

Carbon Grey
LEBC

Sustainability

Koskisen's products are safe for their intended use and meet the quality, environment and product specific requirements set for them. Product development emphasises the development of responsible and sustainable product features. The focus is on improving the long-term use, renewability, safety, and traceability of products. Read more: koskisen.com/sustainability

Additional information

Wood is a living material and every panel is unique. Therefore a photograph or a sample piece cannot represent a full sized panel as regards colours, shades, figure, knots etc. Please note that a slight colour variation is accepted between panels. The information, although based on extensive testing, is intended as a guideline only and comes without warranty. We reserve the right to amend specifications without notice. Any defects other than those caused by clearly verified production or service faults by the supplier are the responsibility of the user. Any claim for compensation is limited to the value of the defective panels. The Seller makes no guarantee that the goods are fit for a particular purpose, unless it provides a written declaration of their suitability.



Koskisen Thin Plywood Industry

Otavantie 395, 52550 Hirvensalmi, FINLAND

tel. +358 20 553 41

koskisen.com

